


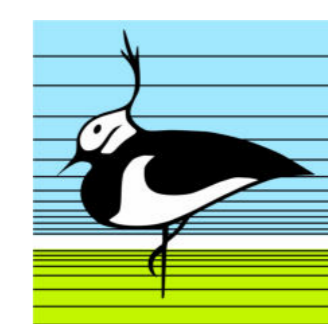
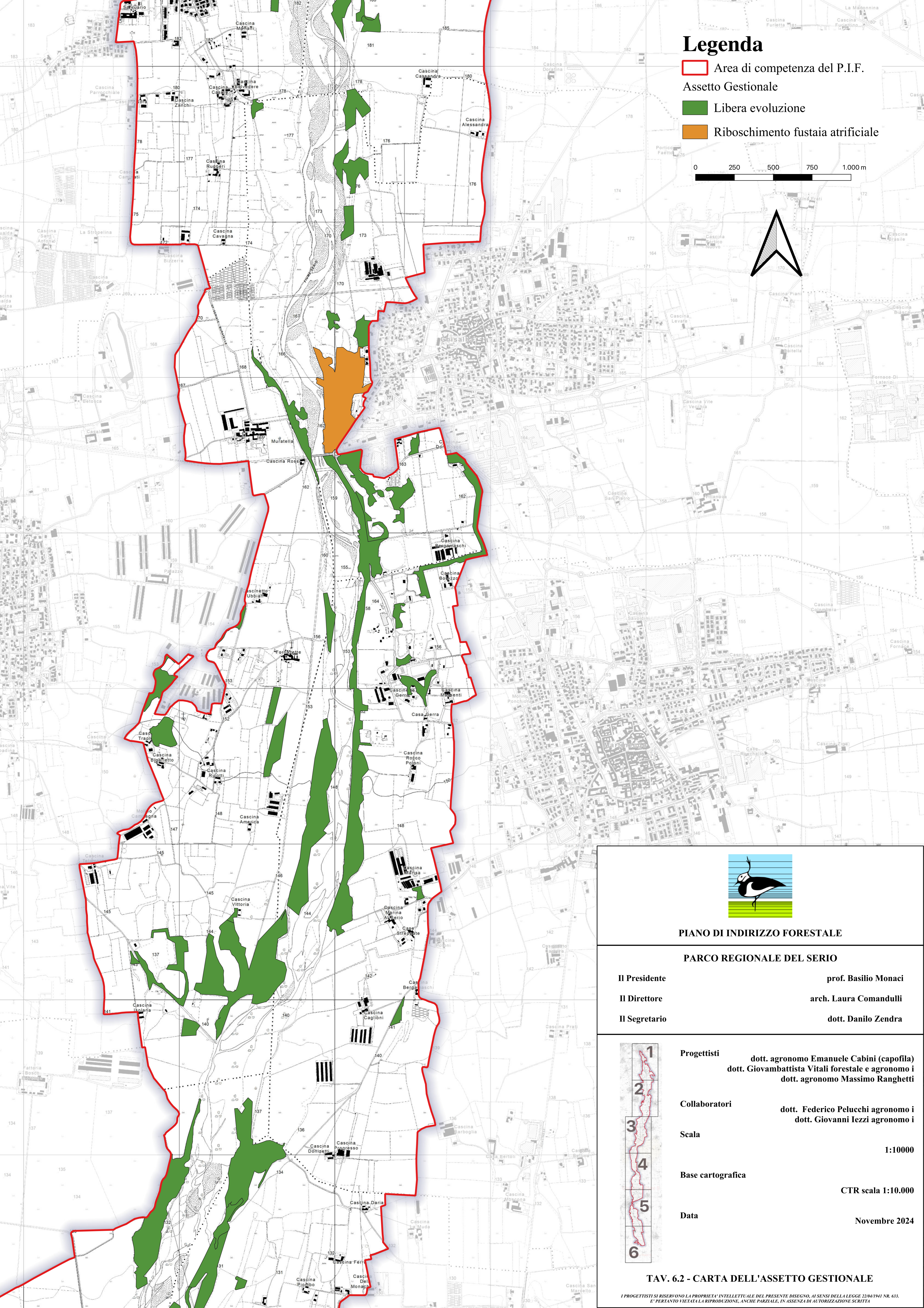
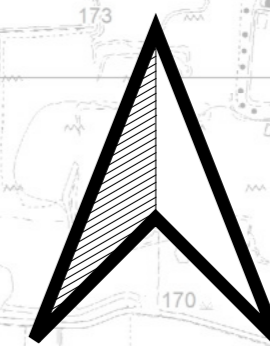


# Legenda

-  Area di competenza del P.I.F.
- Assetto Gestionale**
-  Libera evoluzione
-  Riboschimento fustaia artificiale

0 250 500 750 1.000 m



## PIANO DI INDIRIZZO FORESTALE

### PARCO REGIONALE DEL SERIO

<b>Il Presidente</b>	prof. Basilio Monaci
<b>Il Direttore</b>	arch. Laura Comandulli
<b>Il Segretario</b>	dott. Danilo Zendra

<b>Progettisti</b>	dott. agronomo Emanuele Cabini (capofila) dott. Giovambattista Vitali forestale e agronomo i dott. agronomo Massimo Ranghetti
--------------------	---

<b>Collaboratori</b>	dott. Federico Pelucchi agronomo i dott. Giovanni Iezzi agronomo i
----------------------	---

<b>Scala</b>	1:10000
--------------	---------

<b>Base cartografica</b>	CTR scala 1:10.000
--------------------------	--------------------

<b>Data</b>	Novembre 2024
-------------	---------------



TAV. 6.2 - CARTA DELL'ASSETTO GESTIONALE